



# MOTOR LINK Keyfob Remote Motor Controller

*Direct remote control of DC gear motor or linear actuator up to 25 amps!*



## OPERATION

### Radio Operation

2 button keyfob controls 2 or 3 wire reversible DC gear motors or linear actuators in both directions.

### Manual Override

A single-pole, double-throw (SPDT) switch can be connected to the override input. This input terminal provides a low-power control signal, so the override switch does not switch the full motor current. When the override switch is in use, the radio remote control is temporarily disabled for safety.

### Coding

Each system is factory shipped with a unique random radio address to prevent other radio transmitters from causing unwanted operation. The address can be changed in the field, and the receiver can learn a new transmitter address.

## APPLICATIONS

- Electric gates
- Roll-up doors
- Tarpers
- Linear actuator motors

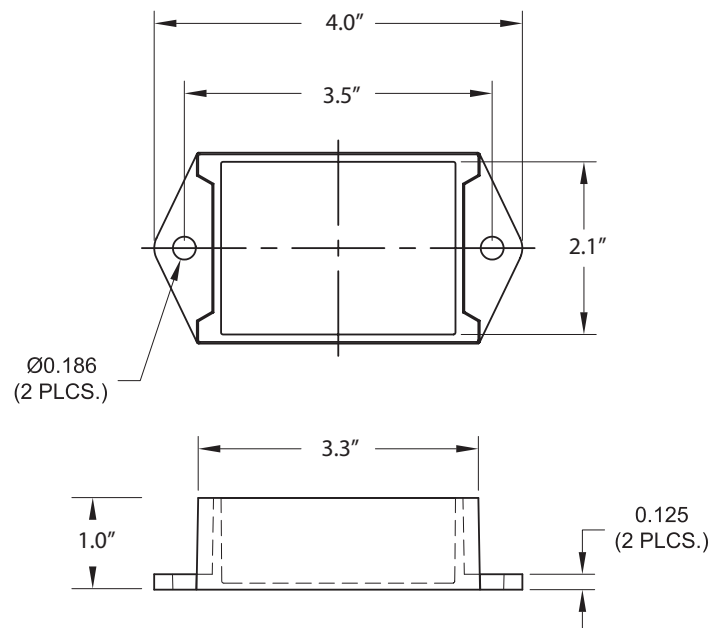
## ORDERING INFORMATION

PART #	DESCRIPTION
ML433-KF2	Keyfob transmitter, 2-button
RFM10-MOT	Receiver module with motor control output and override input

## FEATURES

- **Rugged, Compact Receiver**  
Fully encapsulated receiver withstands harsh environments. Small package fits easily in tight spaces.
- **High-Capacity Solid-State Output**  
Directly controls DC gear motors up to 25 amps. 100% solid state output. No mechanical relays to wear out. Controls 2 or 3 wire motors in forward and reverse.
- **Manual Override**  
Terminal provided for manual override switch. Low-power operation compatible with a wide range of low-current single pole switches. Smart override input temporarily overrides radio control for increased safety.
- **Coded Signal**  
Remote signal is coded to prevent unwanted control by other radio transmitters. Receiver can automatically learn new replacement transmitters as needed.
- **Status Indicators**  
LED's provided for easy setup and troubleshooting.
- **License Free**  
Pre-certified FCC. No end-user license required.

## DIMENSIONS

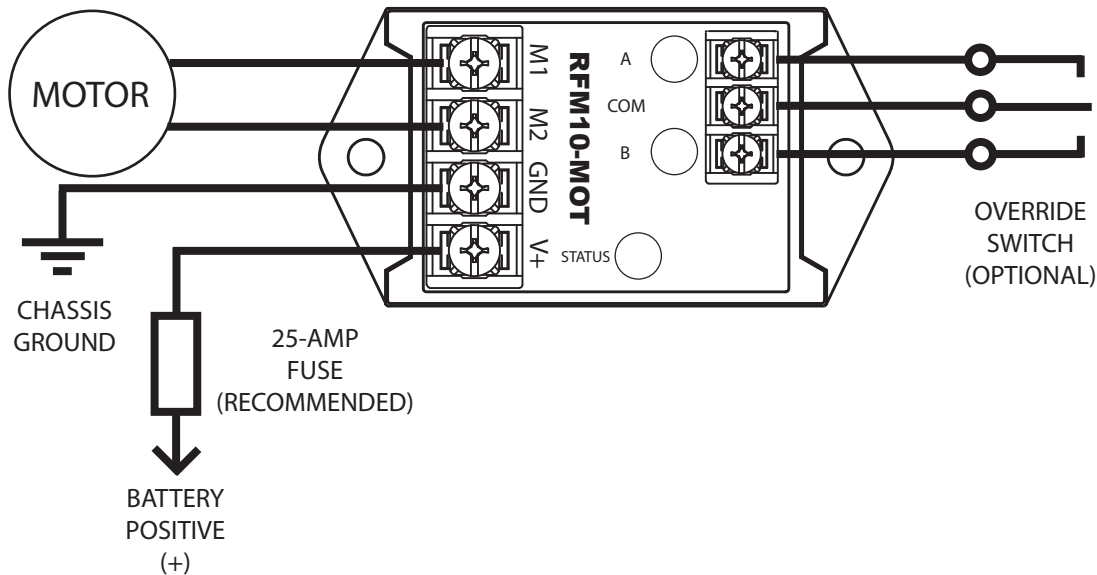


*Terminals (not pictured) add additional height.*

# SPECIFICATIONS

<b>Transmitter</b>	Frequency	433MHz
	Frequency Control	FM
	Range	Keyfob transmitter: 50-100' outdoor line of sight
	RF Power	1mW, nominal
<b>Receiver</b>	Battery Type	3-volt lithium coin cell, CR 2032
	Power Requirement	12vdc, 50mA max plus motor load current
	Antenna	Built-in, (external option)
	Output type	25-amp, Solid state
<b>Dimensions</b>	Field Wiring	Terminal blocks
	Overall	4.0" L x 2.1" W x 1" H
<b>Environmental</b>	Mounting	Molded-in mounting tabs. Hardware included.
	Sealing	Potted electronic module
	Storage	-40°C to 85°C
	Operating ambient temperature	-10°C to 50°C

# WIRING



### TERMINAL BLOCK LABELS:

- M1 MOTOR, 20 AMPS MAX.
- M2 MOTOR, 20 AMPS MAX.
- GND CHASSIS GROUND / BATTERY NEG (-)
- V+ 12V BATTERY POS (+)
  
- A SWITCH (POSITION 1)
- COM SWITCH POLE/Common
- B SWITCH (POSITION 2)