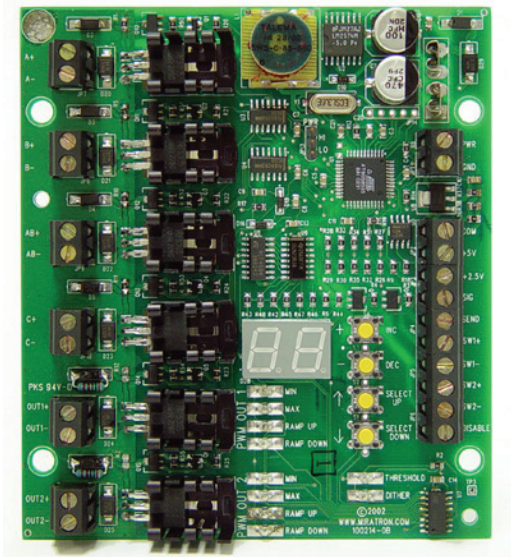




PC100 Proportional Controller Card, Single

One pot or joystick controls one proportional output.



FEATURES

Simple, Complete Solution

Complete, single component interface allows virtually any joystick or potentiometer to directly control a PWM current operated valve actuator.

Universal Inputs

Compatible with a wide range of input devices, including potentiometers, transducers, and other devices producing 0 to 10vdc, 0 to 5vdc, or 0.5 to 4.5vdc control signals. Also accepts inputs from switches for manual override.

Fully Adjustable

Adjustable min, max, ramp-up, ramp-down, dither, and threshold (deadband). Great for setting a desired operating range and “feel.”

Versatile Outputs

One high-capacity proportional output and one digital output are ideal for simple control applications. Outputs can drive up to 5-amp coils directly.

OPERATION

Input Signal

Jumper selectable 0 to 5vdc or 0.5 to 4.5vdc input. Use resistor divider (see installation instructions) to accommodate 0-10vdc input signal. Use 250-ohm shunt resistor (see installation instructions) to accommodate 4 to 20mA input signal.

Adjustments

Min, max, ramp up, ramp down, dither, and threshold (deadband) are adjustable from 0-99% of full-scale range. See specifications for adjustment ranges.

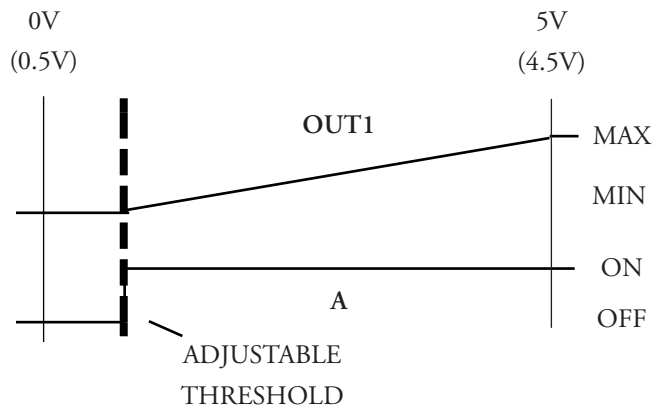
Outputs

Proportional and digital outputs can drive up to 5-amp coils directly. Digital output operates whenever joystick or pot is above threshold (deadband) setting. This output can be used to operate a pump or other control valve.

Manual Operation

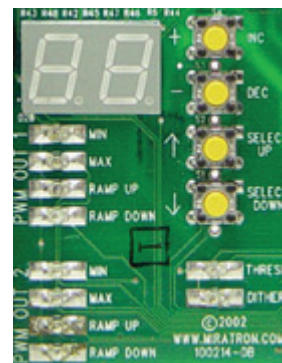
Inputs are provided for a toggle switch to manually override or “bump” the output signal without using a joystick or potentiometer.

OPERATION DIAGRAM



SETUP

Pushbutton and LED menu interface simplifies adjustments. Digital setup eliminates guesswork.



ORDERING INFORMATION

PART #	DESCRIPTION
PC100	Single coil valve driver

SPECIFICATIONS

General	Power requirement	9-30vdc, 250mA nominal + power to loads
	Fuse	Blade fuse, 15-amp
Digital Output	Type	Sourcing
	Output	Same as supply voltage, 5-amps max
PWM Output	Frequency	1700Hz
	Dither	100Hz, 0-10% of max current
	Output	Same as supply voltage, 5-amps max
	Adjustments	Min/Max: 0-5-amps Ramp up/down: 0.1 to 5 seconds Threshold: 0 to 2vdc Dither: 0-10%
Analog Input	Signal Range	0 to 5vdc or 0.5 to 4.5vdc, jumper selectable
	Courtesy Power	+5vdc, 50mA max signal provided for potentiometer 1k pot recommended
Digital Inputs	Manual Switches	Dry contact - connect "SEND" to SW1+ or SW1-
	Disable	Connect to power terminal to disable control Do not use disable input for safety control
Dimensions	Overall	4.8"L x 4.25"W x 1.125"D
	Mounting	4 x #6 self-tapping screws
Environmental	Storage	-40°C to 85°C
	Operating	-10°C to 60°C

WIRING EXAMPLES:

